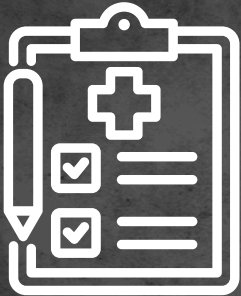
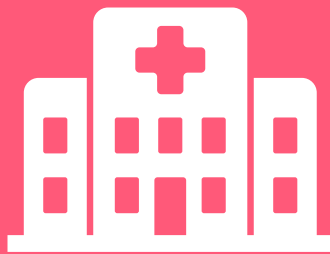


2014-2024

Sexual Assault Forensic Exam 10 Year Impact Report



3,114
FORENSIC
EXAMS



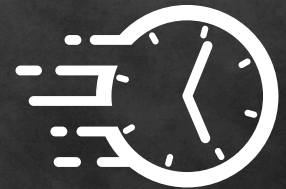
40
LOCAL
MEDICAL
FACILITIES



The WCJ supports
assault survivors of
all genders.



Five-day forensic
exam window



45-minute
response time

SERVING DUVAL, BAKER,
& NASSAU COUNTIES

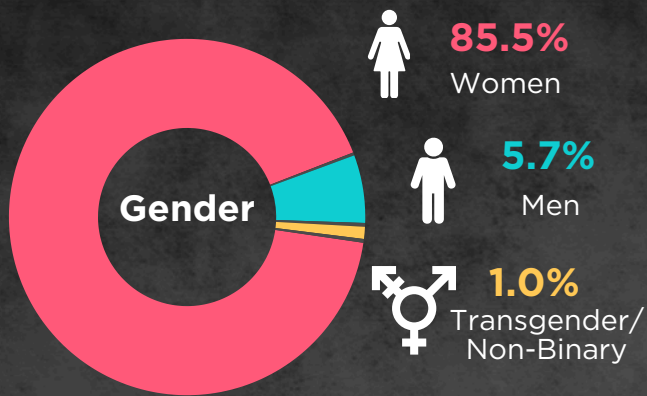


Women's
Center of
Jacksonville

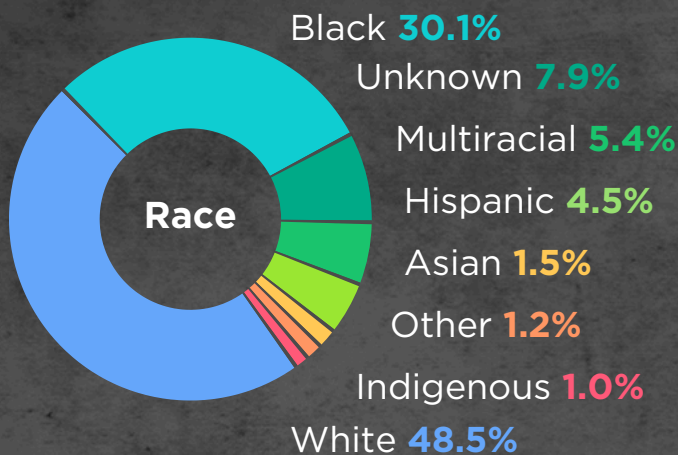
24-hr. rape crisis hotline: 904.721.7273



advocacy.
support.
education.

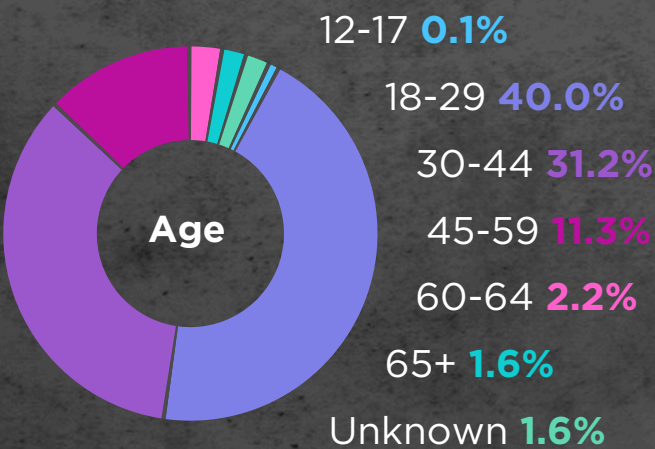


Each year, our programs interact with over 4,000 survivors and family members. Over the last decade, our Sexual Assault Forensic Exam (S.A.F.E) program has become a lifeline for survivors, ensuring compassionate, trauma-informed care. With your help we will continue our work and create a safer world for all!



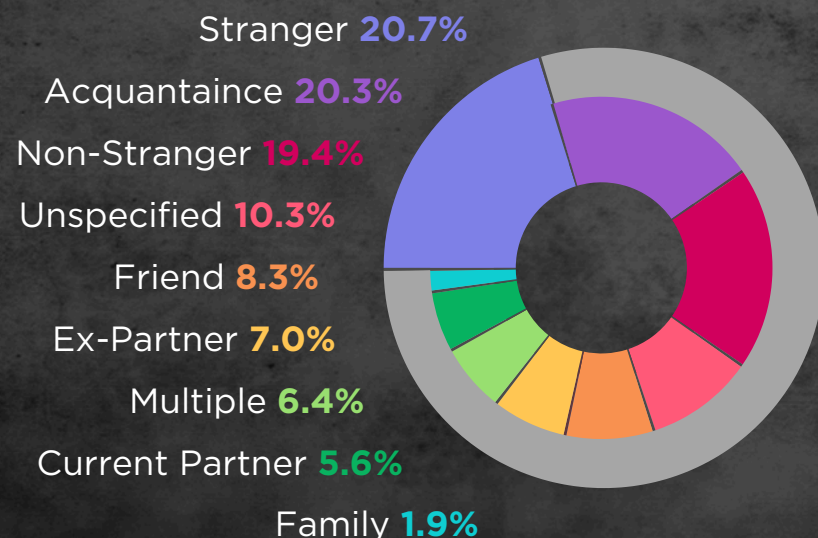
The SAFE Program conducts 55% of Sexual Assault Forensic Exams at our dedicated J. Wayne and Delores Barr Weaver SAFE Center. The other 45% are conducted in 40+ local emergency rooms and medical facilities throughout three counties.

- **32%** of assaults were facilitated by drugs or alcohol
- In **18%** of assaults, the perpetrator had a weapon
- **10%** of assaults involved some form of strangulation
- **2.4%** of assaults had a connection to social media in some capacity



Perpetrator Relationship

National sexual assault data shows that perpetrators of sexual violence are most often someone the survivor knows. Our impact report data reflects these national trends, with **80.3%** of assaults committed by someone the survivor knew and only **20.7%** of assaults committed by strangers.



This emphasizes the need to address interpersonal dynamics of trust and power in prevention efforts and survivor support.